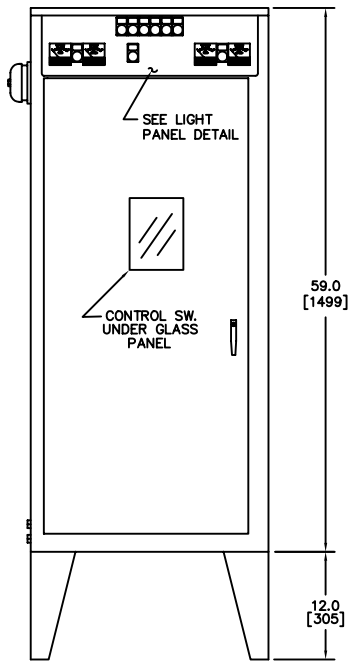
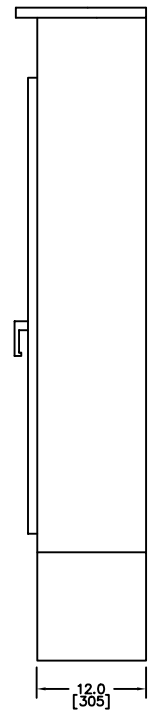


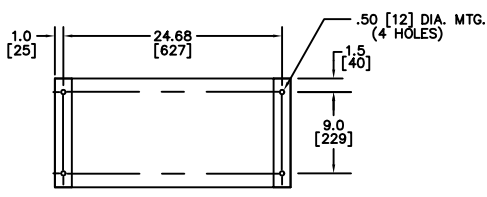
SIDE VIEW



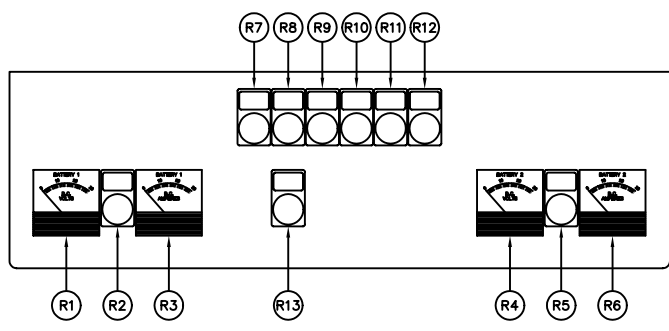
FRONT VIEW



SIDE VIEW



BOTTOM VIEW



LIGHT PANEL DETAIL

LEGEND

- R1. BATTERY #1 VOLTMETER
- R2. BATTERY #1 LIGHT
- R3. BATTERY #1 AMMETER
- R4. BATTERY #2 VOLTMETER
- R5. BATTERY #2 LIGHT
- R6. BATTERY #2 AMMETER
- R7. SWITCH IN AUTO LIGHT
- R8. LOSS OF CHARGER / AC FAILURE LIGHT
- R9. LOW OIL PRESSURE LIGHT
- R10. HIGH ENGINE TEMPERATURE LIGHT
- R11. FAILED TO START LIGHT
- R12. OVERSPEED LIGHT
- R13. STOP PUSH BUTTON

NOTES:

1. ALL DIMENSIONS ARE SHOWN IN INCHES AND MILLIMETERS ([]).
2. APPROXIMATE SHIPPING WEIGHT: 270lbs. - 305lbs.

ENCLOSURE DIMENSIONS MODEL FD2 ENGINE DRIVEN FIRE PUMP CONTROLLER	DRAWN	SR	2-12-99	METRON, INC. DENVER, CO.
	CHECK	KH	2-12-99	
	APPD	z.a.	2-12-99	
OPTIONS:				
				CD33281B
SCALE 1/10				SHEET 1 OF 1